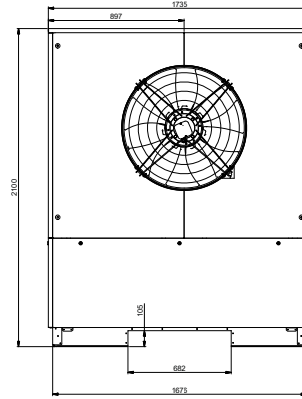
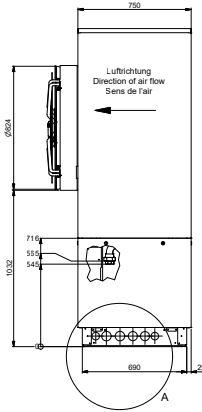
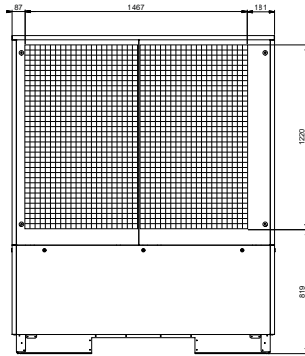
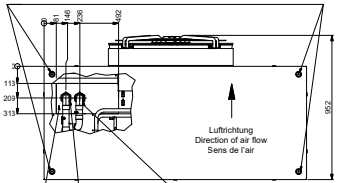


# LA 40TU-2



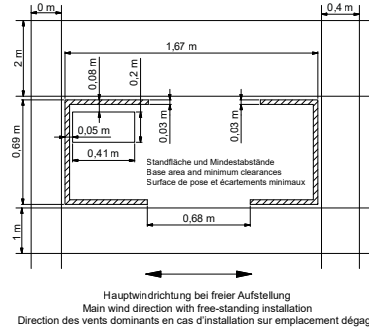
Ringschrauben für Krantransport nach Aufstellung ausschrauben!  
Remove eyebolts for crane transport after set-up!  
Après installation, dévisser les anneaux de levage servant au grutage !



Durchführungsbereich  
Kondensatablauf  
Elektroleitungen  
Feedthrough area  
Condensate outflow,  
Electric cables  
Zone de passage  
Écoulement des condensats,  
conduites électriques

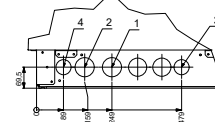
Heizungsvorlauf  
Ausgang aus der WP  
1 1/2" Innengewinde  
Heat return flow  
Input into the HP  
1 1/2" internal thread  
Circuit de chauffage retour  
Entrée dans la PAC  
Filetage intérieur 1 1/2"

Heizungsrücklauf  
Eingang in die WP  
1 1/2" Innengewinde  
Heat flow  
Output from the HP  
1 1/2" internal thread  
Circuit de chauffage aller  
Sortie de la PAC  
Filetage extérieur 1 1/2"



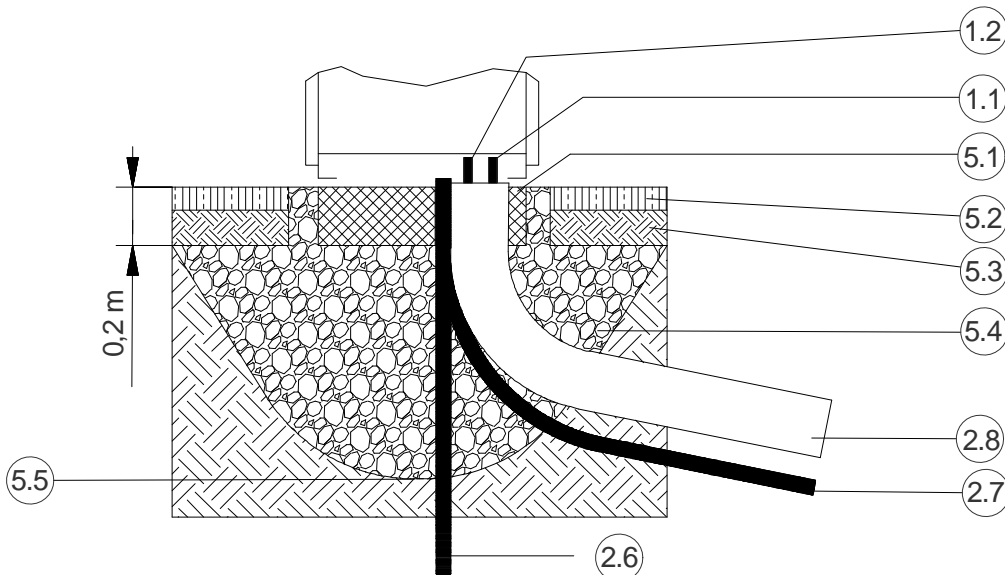
Hauptwindrichtung bei freier Aufstellung  
Main wind direction with free-standing installation  
Direction des vents dominants en cas d'installation sur emplacement dégagé

A (1:5)



Legende Option seitliche Anschlüsse:  
Legend - optional side connections:  
Légende raccords latéraux en option :

- |   |   |  |   |
|---|---|--|---|
| 1 | Heizungsvorlauf Ausgang aus der WP<br>1 1/2" Außengewinde | Heat flow output from HP<br>1 1/2" external thread       | Circuit de chauffage aller, sortie de la PAC<br>Filetage extérieur 1 1/2"       |
| 2 | Heizungsrücklauf Eingang in die WP<br>1 1/2" Außengewinde | Heat return flow input into HP<br>1 1/2" external thread | Circuit de chauffage retour,<br>entrée dans la PAC<br>Filetage extérieur 1 1/2" |
| 3 | Durchführungsbereich<br>Kondensatablauf                   | Feedthrough area<br>for condensate outflow               | Passage de la conduite<br>d'écoulement des condensats                           |
| 4 | Durchführungsbereich<br>Elektroleitungen                  | Feedthrough area<br>for electric cables                  | Passage des conduites électriques   |



Glen Dimplex Thermal Solutions T: + 49 9221 709-100  
(Glen Dimplex Deutschland GmbH) F: + 49 9221 709-339  
Am Goldenen Feld 18 dimplex@dimplex.de  
D-95326 Kulmbach www.dimplex.de

Glen Dimplex Austria GmbH  
Hauptstraße 71  
A-5302 Henndorf am Wallersee

T: + 43 6214 20330  
F: + 43 6214 203304  
info@dimplex.at  
www.dimplex.at

# LA 40TU-2

## 1. Hydraulic connections

1.1 Flow

1.2 Return

1.11 Flow (optional)

1.21 Return (optional)

1.3 Domestic hot water flow

1.4 Hot water return

1.5 Heat source flow

1.6 Heat source return

1.7 Filling and drain cock

1.8 Combined heating/domestic hot water return

## 2. Feed-throughs/pipes

2.1 Feed-through - condensate pipe

2.2 Feed-through - electric wire

2.11 Feed-through condensate pipe (optional)

2.21 Feed-through electric wire (optional)

2.5 Condensate drain

2.6 Condensate pipe

2.7 Electric empty conduit

2.8 District heating pipe

## 3. Transport/operation

3.1 Ring bolt for crane transport

3.2 Transport tunnel

3.3 Transport opening for carrier pipe

3.4 Operator side

## 4. Air circuit

4.1 Direction of air flow

4.2 Main wind direction with free-standing installation

4.3 Air inlet

4.4 Air outlet

4.31 Air inlet (optional)

4.41 Air outlet (optional)

## 5. Foundation

5.1 Foundation

5.2 Green field

5.3 Earth

5.4 Layer of gravel

5.5 Frost line

5.6 Contact surface floor frame (all-round)

Glen Dimplex Thermal Solutions T: + 49 9221 709-100  
(Glen Dimplex Deutschland GmbH) F: + 49 9221 709-339  
Am Goldenen Feld 18 dimplex@dimplex.de  
D-95326 Kulmbach www.dimplex.de

Glen Dimplex Austria GmbH T: + 43 6214 20330  
Hauptstraße 71 F: + 43 6214 203304  
A-5302 Henndorf am Wallersee info@dimplex.at  
www.dimplex.at

# LA 40TU-2

## Notes:

The condensate pipe must lead to the drainage facilities. The frost line can vary according to the climatic region.

The regulations of the countries in question must be observed. For unprotected free-standing installation, heat pumps without deflector hoods must be installed at right angles to the main wind direction.

Depending on the heat pump type, not all points of the legend are included in the drawing.

Glen Dimplex Thermal Solutions T: + 49 9221 709-100  
(Glen Dimplex Deutschland GmbH) F: + 49 9221 709-339  
Am Goldenen Feld 18 dimplex@dimplex.de  
D-95326 Kulmbach www.dimplex.de

Glen Dimplex Austria GmbH T: + 43 6214 20330  
Hauptstraße 71 F: + 43 6214 203304  
A-5302 Henndorf am Wallersee info@dimplex.at  
www.dimplex.at