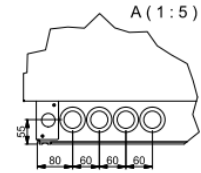
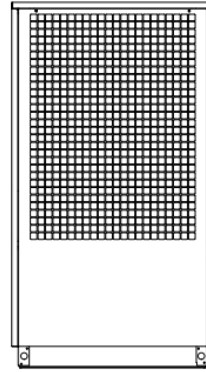
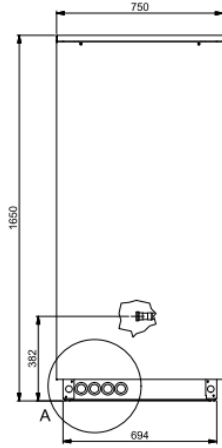
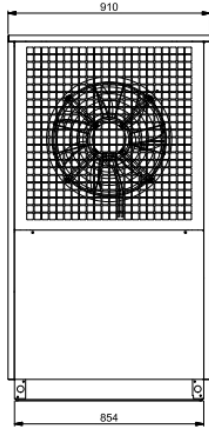
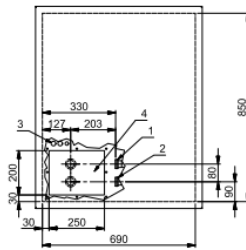
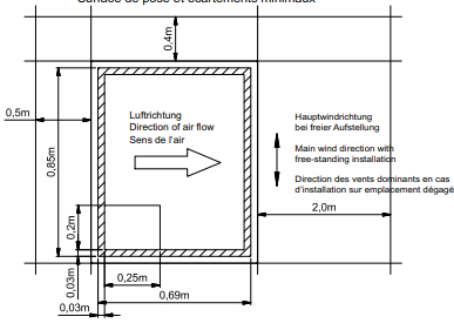


LA 0712BWC



Standfläche und Mindestabstände
Base area and minimum clearances
Surface de pose et écartements minimaux



1 Heizwasservorlauf
Ausgang aus Wärmepumpe
G 1 1/4" Außengewinde

Heating water flow
Output from heat pump
1 1/4" external thread

Circuit aller d'eau de chauffage
Sortie de la pompe à chaleur
Filetage extérieur 1 1/4"

2 Heizwasserrücklauf
Eingang in Wärmepumpe
G 1 1/4" Außengewinde

Heating water return flow
Input into the heat pump
1 1/4" external thread

Circuit retour d'eau de chauffage
Entrée dans la pompe à chaleur
Filetage extérieur 1 1/4"

3 Durchführungsbereich
Elektroleitungen

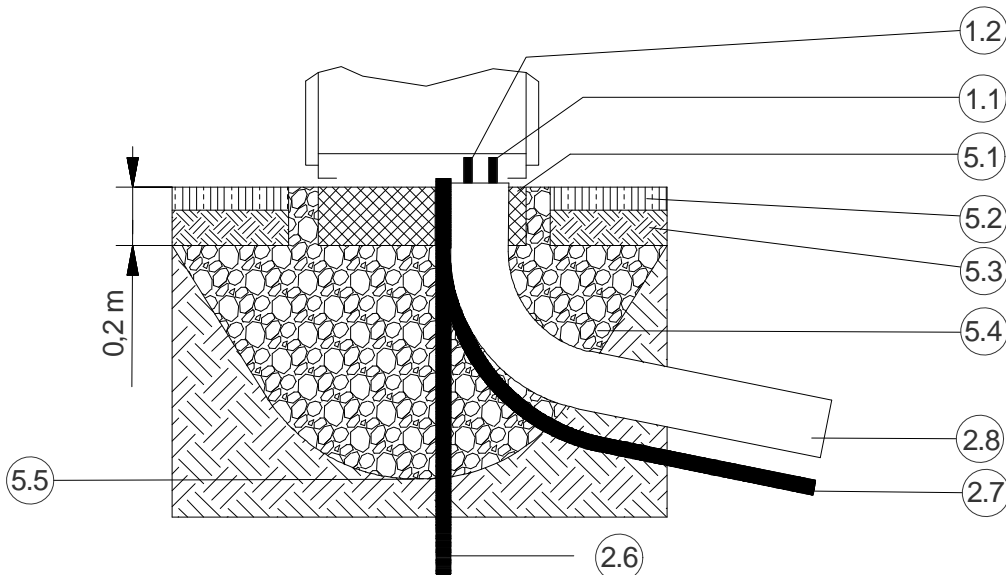
Feedthrough area
Electrical lines

Zone de passage
Conduites électriques

4 Durchführungsbereich
Kondensatschlauch

Feedthrough area
Condensate hose

Zone de passage
Flexible d'évacuation des condensats



Glen Dimplex Thermal Solutions
(Glen Dimplex Deutschland GmbH)
Am Goldenen Feld 18
D-95326 Kulmbach
T: + 49 9221 709-100
F: + 49 9221 709-339
dimplex@dimplex.de
www.dimplex.de

Glen Dimplex Austria GmbH
Hauptstraße 71
A-5302 Henndorf am Wallersee

T: + 43 6214 20330
F: + 43 6214 203304
info@dimplex.at
www.dimplex.at

LA 0712BWC

1. Hydraulic connections

1.1 Flow

1.2 Return

1.11 Flow (optional)

1.21 Return (optional)

1.3 Domestic hot water flow

1.4 Hot water return

1.5 Heat source flow

1.6 Heat source return

1.7 Filling and drain cock

1.8 Combined heating/domestic hot water return

2. Feed-throughs/pipes

2.1 Feed-through - condensate pipe

2.2 Feed-through - electric wire

2.11 Feed-through condensate pipe (optional)

2.21 Feed-through electric wire (optional)

2.5 Condensate drain

2.6 Condensate pipe

2.7 Electric empty conduit

2.8 District heating pipe

3. Transport/operation

3.1 Ring bolt for crane transport

3.2 Transport tunnel

3.3 Transport opening for carrier pipe

3.4 Operator side

4. Air circuit

4.1 Direction of air flow

4.2 Main wind direction with free-standing installation

4.3 Air inlet

4.4 Air outlet

4.31 Air inlet (optional)

4.41 Air outlet (optional)

5. Foundation

5.1 Foundation

5.2 Green field

5.3 Earth

5.4 Layer of gravel

5.5 Frost line

5.6 Contact surface floor frame (all-round)



Glen Dimplex Thermal Solutions T: + 49 9221 709-100
(Glen Dimplex Deutschland GmbH) F: + 49 9221 709-339
Am Goldenen Feld 18 dimplex@dimplex.de
D-95326 Kulmbach www.dimplex.de

Glen Dimplex Austria GmbH T: + 43 6214 20330
Hauptstraße 71 F: + 43 6214 203304
A-5302 Henndorf am Wallersee info@dimplex.at
www.dimplex.at

LA 0712BWC

Notes:

The condensate pipe must lead to the drainage facilities. The frost line can vary according to the climatic region.

The regulations of the countries in question must be observed. For unprotected free-standing installation, heat pumps without deflector hoods must be installed at right angles to the main wind direction.

Depending on the heat pump type, not all points of the legend are included in the drawing.



Glen Dimplex Thermal Solutions T: + 49 9221 709-100
(Glen Dimplex Deutschland GmbH) F: + 49 9221 709-339
Am Goldenen Feld 18 dimplex@dimplex.de
D-95326 Kulmbach www.dimplex.de

Glen Dimplex Austria GmbH T: + 43 6214 20330
Hauptstraße 71 F: + 43 6214 203304
A-5302 Henndorf am Wallersee info@dimplex.at
www.dimplex.at